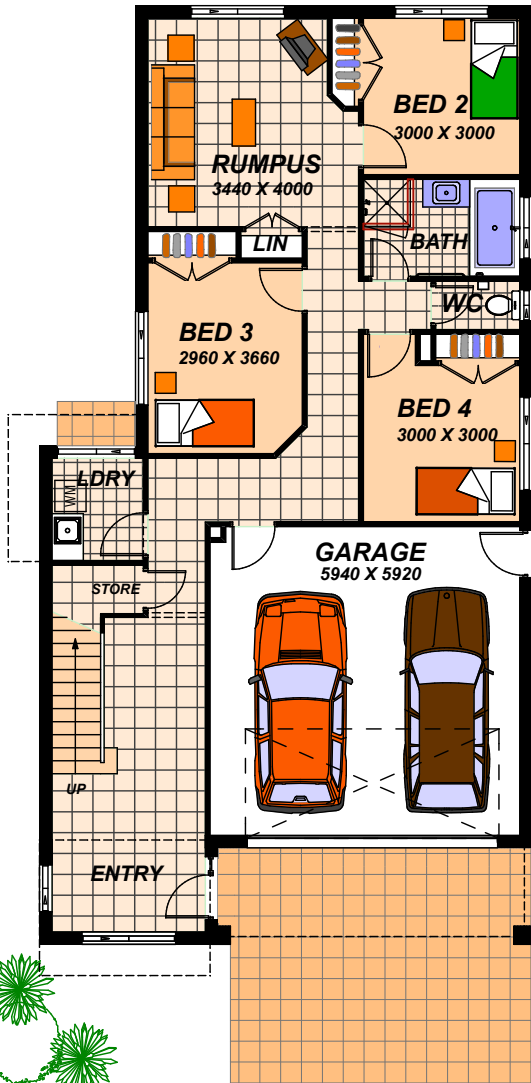


STRADBROKE 297



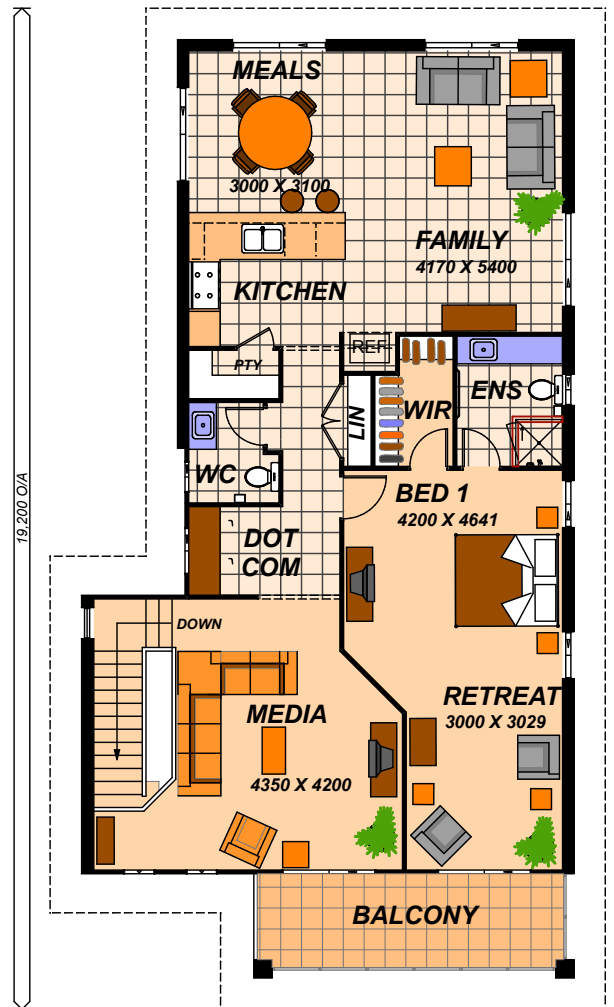
FACADE A

10,650 O/A



GROUND FLOOR

10,650 O/A



FIRST FLOOR

AREA:
297.38 sq metres,
or 32.0 squares

STRADBROKE 297

Suits 14.65m wide blocks

PLAN COPYRIGHT © - METRO HOMES 2012
REPRODUCTION IN WHOLE OR PART, STRICTLY PROHIBITED
WITHOUT WRITTEN PERMISSION

METRO HOMES AUSTRALIA Pty. Ltd. BSA Lic. No. 1212461

HEAD OFFICE
10/140 WECKER ROAD
MANSFIELD QLD 4122
PHONE: 07 3849 6498
FAX: 07 3849 6261
[http:// www.metrohomes.com.au](http://www.metrohomes.com.au)

